



# DARAJO HEIGHTS



A Window To A New World Can Also Show You Home



# INTRODUCTION

---

Welcome to Darajo Heights, where urban living and commercial convenience meet.

Experience refined living amidst the vibrant city energy, where every detail is meticulously crafted to exceed expectations.

From;

- Luxurious Duplex Penthouse
- Spacious 4-bedroom
- Elegant 3-bedroom
- Stylish 2-bedroom

Join us on a journey towards sophisticated living, where each moment is a masterpiece waiting to be discovered.

---



Step into a  
**WORLD**  
of Modern  
**ELEGANCE!**



# PROJECT OVERVIEW:

## UNIT TYPES:

2BDR, 3BDR, 4BDR & DUPLEX APARTMENTS

## TOTAL NO. OF UNITS

100 UNITS

## 3 BLOCKS

BLOCK A, BLOCK B & BLOCK C

## COMMERCIAL SPACES

3 FLOORS: GROUND, 1ST & 2ND FLOOR

### BLOCK A

UNIT TYPE	AREA:
4 Bedroom + DSQ	271 sqm   2,923 sqft
DUPLEX (5BDR +DSQ)	471 sqm   5,075 sqft

### BLOCK B

UNIT TYPE	AREA:
3 Bedroom + DSQ	224 sqm   2,414 sqft
DUPLEX (5BDR +DSQ)	375 sqm   4,046 sqft

### BLOCK C

UNIT TYPE	AREA:
2 Bedroom	177 sqm   1,908 sqft
2 Bedroom	146 sqm   1,577 sqft



# AMENITIES

---

- 4 High Speed Elevators - 3 for Residential & 1 for Commercial
- 111 - Multi Level Parking Spots
- Rooftop Basketball Court
- Indoor Swimming Pool
- State-of-the-art Fitness Center
- Automatic Power Back Up (common areas)
- CCTV Surveillance
- Electric Fence Boundary
- Landscaped Gardens
- Access Control Room for Enhanced Security
- Exclusive Retail Stores For Your Convenience

## FEATURES

---

- 20 Floors of Luxury Living
- All Bedrooms ensuite + DSQ
- Aluminium windows
- Balconies
- Granite kitchen counters
- In-Built Wardrobes



# AMENITIES

FITNESS CENTRE



BASKETBALL COURT



INDOOR SWIMMING POOL



LANDSCAPED GARDENS



# COMMERCIAL SPACES



Elevate Your Lifestyle with Convenient  
Access to Darajo Heights' Premier  
Commercial Spaces.

## SIZES

2ND FLOOR	359 sqm   3,864 sqft
1ST FLOOR	352 sqm   3,789 sqft
GROUND FLOOR	346 sqm   3,724 sqft







Accessibility of the commercial spaces is simplified with a central staircase and a commercial lift connecting the Ground, 1st & 2nd Floor.



# RECEPTION AREA



Enjoy a moment of tranquility in the midst of city bustle.  
Our reception area and lounge offer contemporary elegance and the ultimate comfort.



# GALLERY



MAIN LOUNGE



DINING



KITCHEN



MASTER BEDROOM



BATH



DUPLEX LOUNGE



# SITE LAYOUT



## KEY

- 1 & 2 - Block A (4Bdr)
- 3 & 4 - Block B (3Bdr)
- 5 & 6 - Block C (2Bdr)

# DUPLEX APARTMENTS

4



# 5

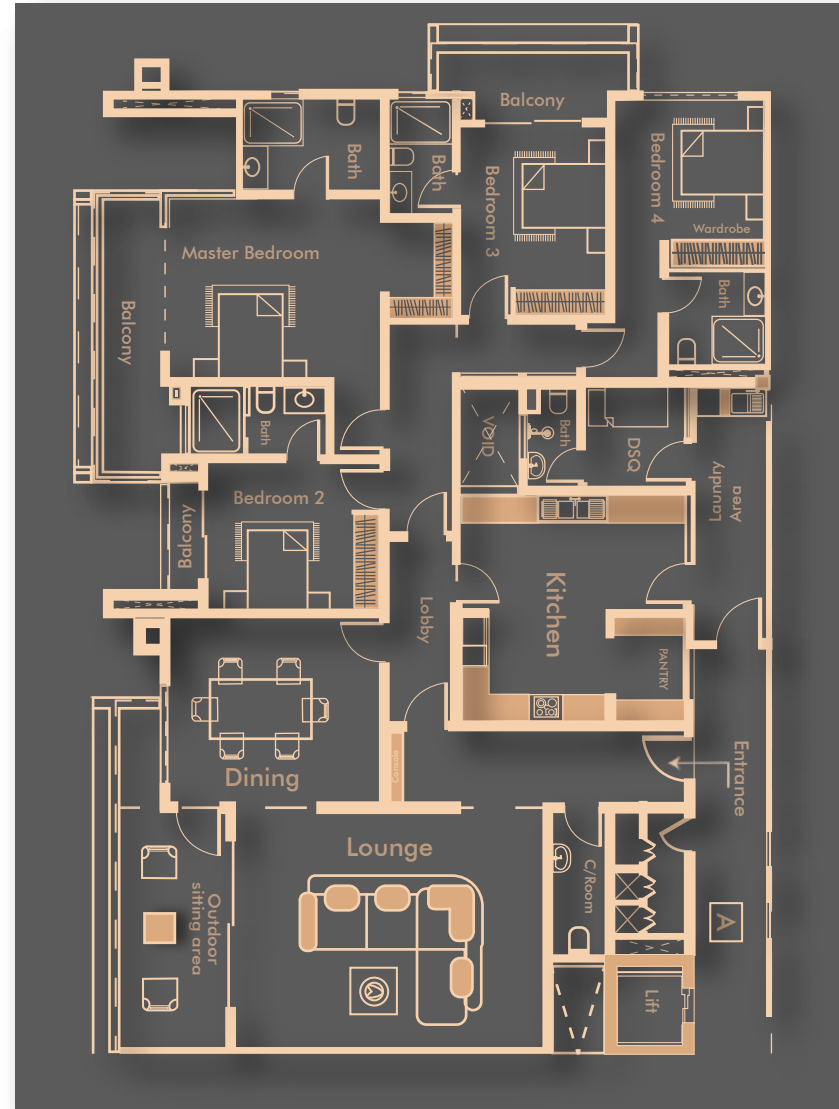
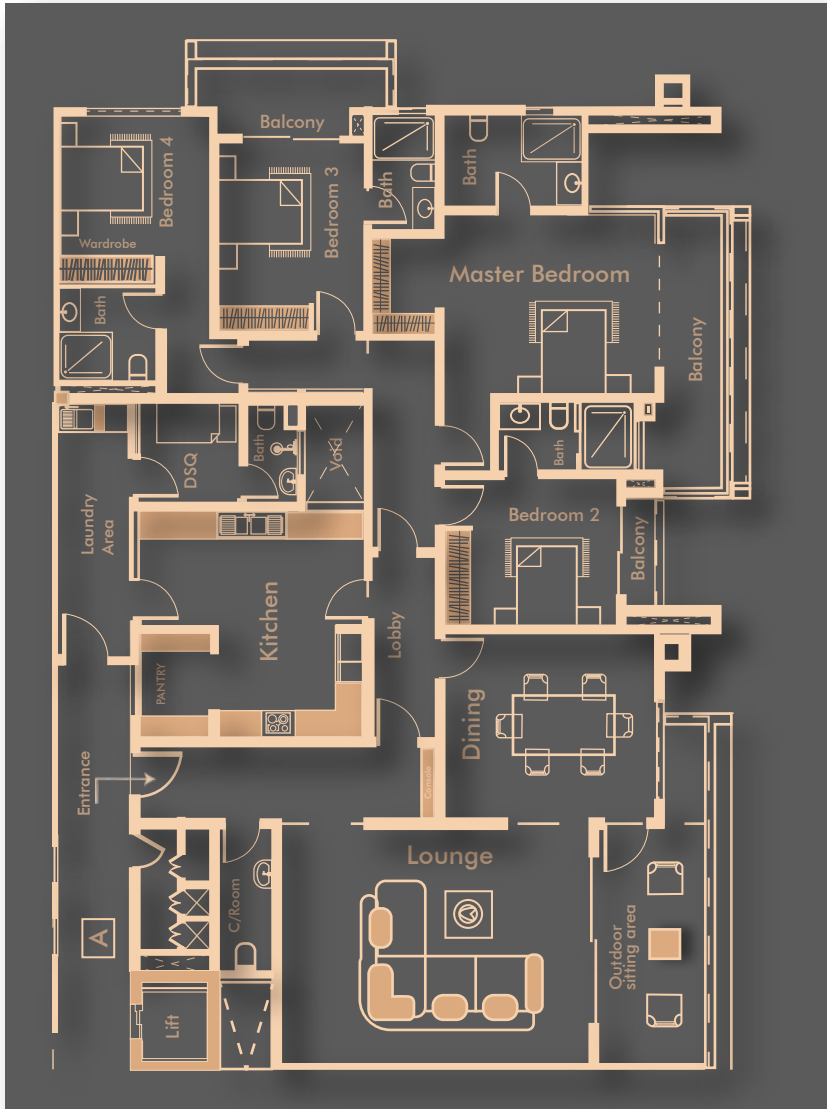
## Bedroom + DSQ

A - (471 sqm | 5,075 sqft)

B - (375 sqm | 4,046 sqft)

# BLOCK A

## 4BDR



2D FLOOR PLAN

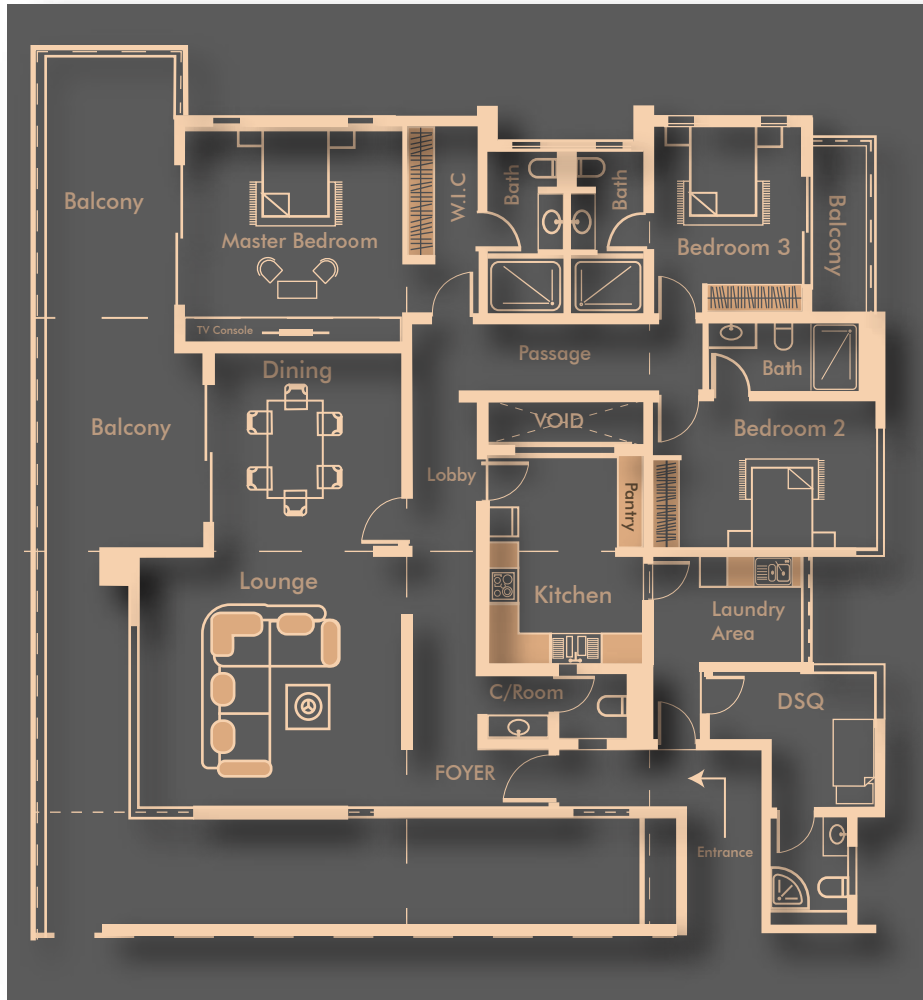
# 3D FLOOR PLAN



**4** Bedroom  
+ DSQ  
(271 sqm | 2,923 sqft)

# BLOCK B

## 3BDR



2D FLOOR PLAN



# 3D FLOOR PLAN

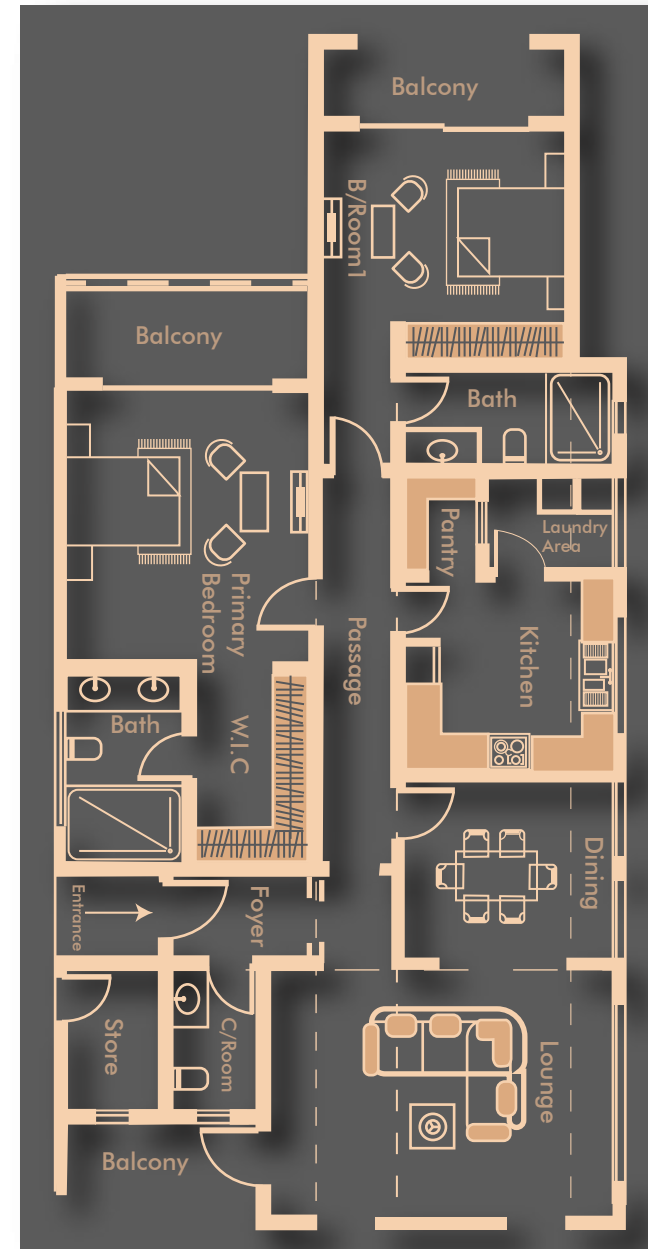
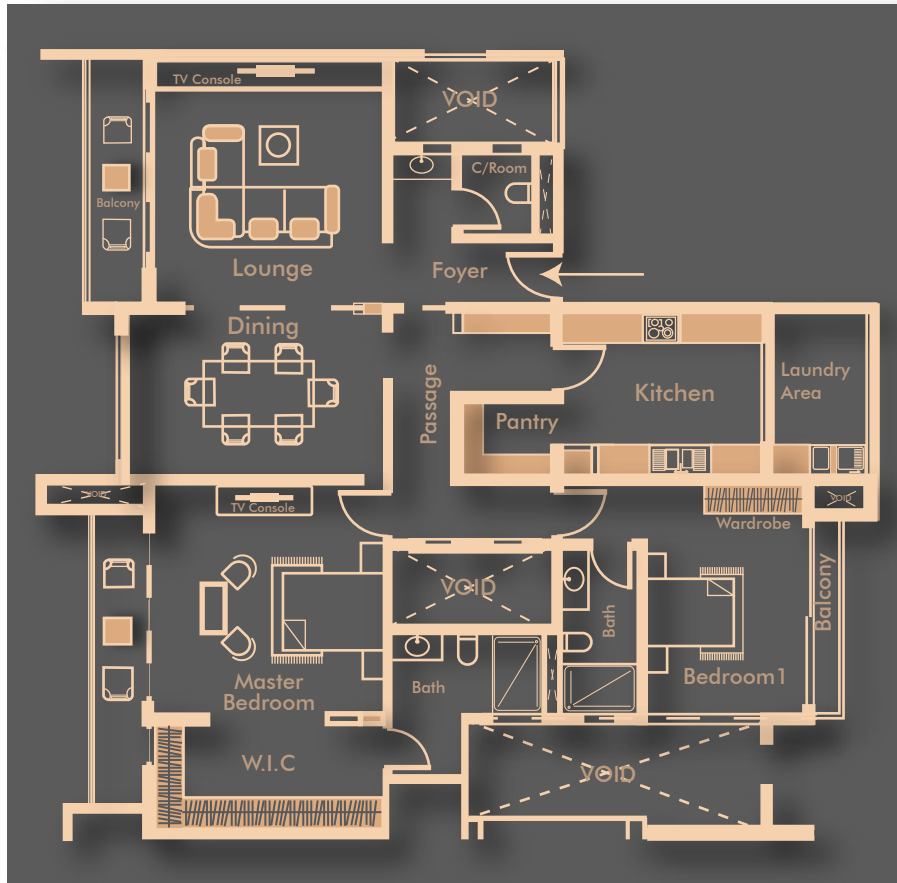


**3** Bedroom  
+ DSQ  
(224 sqm | 2,414 sqft)

# BLOCK C

## 2BDR

⌘



2D FLOOR PLAN

# 3D FLOOR PLAN



**2 Bedroom**  
(177 sqm | 1,908 sqft)  
(146 sqm | 1,577 sqft)

Embrace Urban Living at Darajo Heights;  
Where Cityscape Meets Home.

LINKS ARCADE



PREMIER HOSPITAL



## NEIGHBORHOOD

- Links Arcade
- Hospitals
- Water Park i.e., Wild Waters
- Nyali Golf & Country Club
- Restaurants i.e., Java House
- Shopping Malls i.e., City Mall, QuickMart
- Futsal
- Beach
- Schools and Madrasas



WILD WATERS WATERPARK



# NYALI GOLF CLUB



# BEACH

20



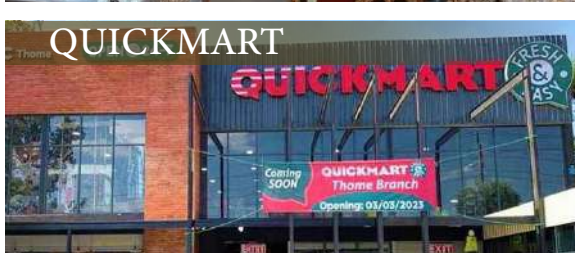
# JAVA HOUSE



# CITY MALL

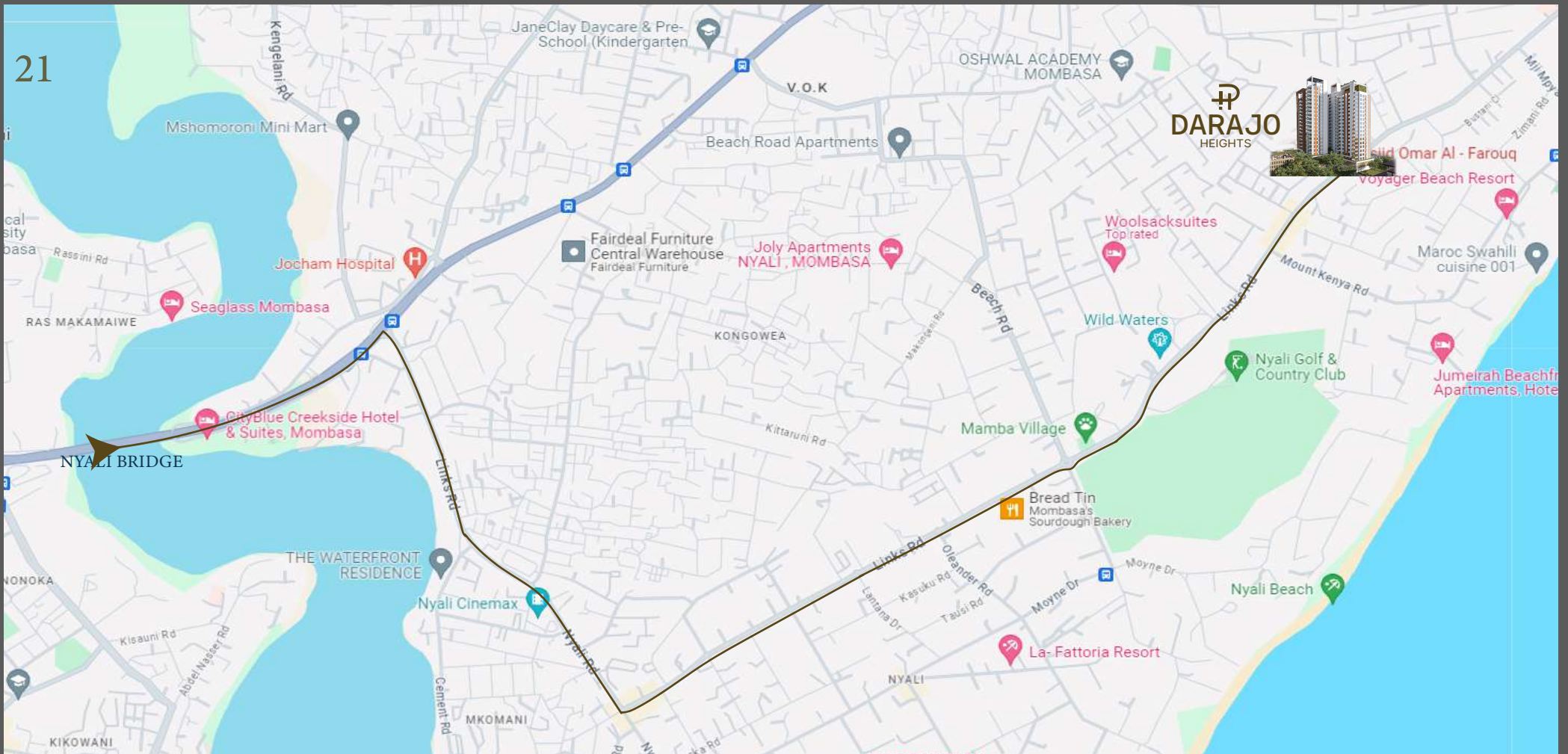


# QUICKMART



# FUTSAL





# THE LOCATION:

Next to Quickmart (Right),  
Next to Masjid Al-Farouq (Left), Nyali  
Opp. Total Petrol Station

- 5-min drive to Nyali Golf & Country Club
- 8-min walk to The Promenade Mall
- 6-min drive to CityMall



# THE PROJECT TEAM



DEVELOPMENT CONSULTANTS  
HEIMAT CONSULT LTD



DEVELOPER  
DARAJO HEIGHTS LTD



LEGAL ADVISORS  
GARANE & SOMANE ADVOCATES  
ABDULLAHI YUSSUF & COMPANY



ARCHITECTS  
MASTA D.SIGNS



STRUCTURAL ENGINEERS  
MASTA D.SIGNS



SERVICE ENGINEERS  
MASTA D.SIGNS

**Disclaimer:** The information contained within this brochure is subject to change. Plans, images, and representations are for indicative purposes only and may not reflect the final product. The company, its employees, or affiliates are not legally liable for any discrepancies between the contents of this brochure and the actual property. Prospective buyers or tenants are advised to verify all details and specifications independently before making any decisions.



## Sole and Exclusive Seller Agents

For more information, contact us at (KE)

+254 795 333 777 / +254 792 111 777 / +254 720 211 168

visit our website at;  
[www.heimatconsult.co.ke](http://www.heimatconsult.co.ke)  
email: [info@heimatconsult.co.ke](mailto:info@heimatconsult.co.ke)  
[sales@heimatconsult.co.ke](mailto:sales@heimatconsult.co.ke)



OR

Make a visit to our offices  
Located at BP Plaza(1st floor), Umoja Rd, Nyali,  
Mombasa